

ROE
CREATIVE DISPLAY



Vanish Air Rental

A New Vision for Transparency

IN- & OUTDOOR LED PANELS



18_{mm}

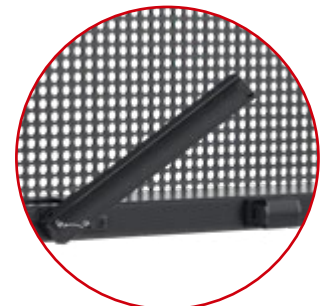
A NEW VISION FOR TRANSPARENCY

Vanish Air Rental marks a generational leap in semi-transparent LED display design for the rental market. With no central PSU column and a frame just **18mm** thin, it introduces a power and structural system that achieves optimal transparency. Lightweight around **8kg** per square meter, Vanish Air Rental delivers a near-invisible structure that lets lighting, staging, and performance breathe freely.

“OPTIMAL TRANSPARENCY”

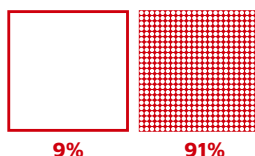
Built on a 1000x1000mm platform, Vanish Air Rental is the first rental LED panel to integrate and distribute power directly through a slim 18mm frame, completely eliminating the central PSU column. This innovation opens up a wider, clearer viewing area while also allowing greater light and sound permeability.

Specialized locks and strategically positioned connectors complete the system, ensuring seamless connection for an uninterrupted canvas of light.



**Specialized
Locking Mechanism**

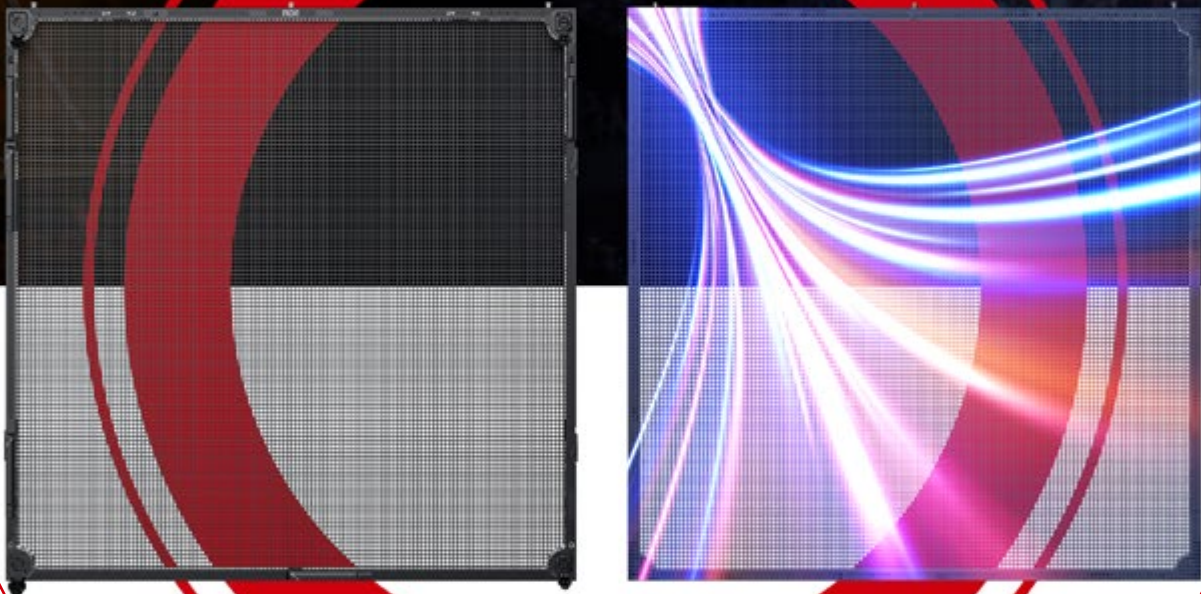
**Visual
transparency
91%**



To further enhance transparency, Vanish Air Rental replaces the traditional grille-style LED layout with a refined perforated LED design. From a distance of just **5-8 meters**, the panel structure visually disappears, delivering an unobstructed viewing experience, allowing stage lighting and scenography to take center stage.

Quality in the Details

Equipped with black LEDs and GOB technology, Vanish Air Rental features a clean PCB layout designed for clarity and contrast. Stray light is minimized, reflections are controlled, and visuals appear crisp and accurate—without color shifting or trailing. The result is a pure, vibrant image that holds up on any stage.



Brightness Perfected for
Every Environment

With a pixel pitch of 6.94 mm and brightness levels of up to 2500nits (indoor) and 4000nits (outdoor), Vanish Air Rental delivers consistent visual punch even in high ambient light. The added luminance compensates for the natural light loss found in transparent displays, ensuring content stays bold and visible while preserving the panel's signature open structure.

Easy Installation

Each module is integrated into a 1-meter frame to streamline setup, alignment and transport. Ideal for fast-turnaround rental environments where efficiency is key.

Custom
Locking
Mechanism

Perforated
Layout

Electronic
Breakthrough

Ultra-
Lightweight

Black LED
and
GOB technology

High-brightness

GOB

Optional Blanking Plate

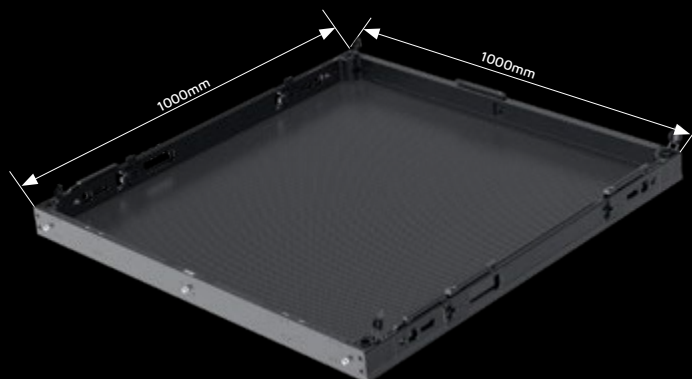
Vanish Air Rental's design flexibility extends beyond transparency. For projects that require a non-transparent display, an optional blanking plate can be easily attached to the rear of the panel. This transforms the screen from transparent to fully solid, offering a dual-purpose solution that maximizes investment and adaptability across diverse production needs.

Specifications

Vanish Air Rental	Vanish Air Rental Indoor	Vanish Air Rental Outdoor
Pixel Pitch	6.94mm	6.94mm
Max Brightness Calibrated	2500nits	4000nits
Panel Dimension	1000mm x 1000mm x 79mm 39.4" x 39.4" x 3.11"	1000mm x 1000mm x 79mm 39.4" x 39.4" x 3.11"
Panel Resolution (H x V)	144 x 144	144 x 144
Panel Weight	9.6kg; 21.16lbs	12.1kg; 26.68lbs
Power Consumption Max / Average	350W / 175W	650W / 325W
Power Consumption Max / AVG	1195 / 550	2110 / 1020
Physical Transparency	47%	44%
Visual Transparency	91%	91%
Serviceability	Full panel service	Full panel service
Curving (Concave & Convex)	Concave 5°, Convex 5°	Concave 5°, Convex 5°
Viewing Angle Horizontal	160°	160°
Viewing Angle Vertical	160°	160°
Scan Ratio	1/6	1/6
Refresh Rate	7680Hz	7680Hz
Gray Scale	16bit	16bit
Frame Material	Magnesium Alloy	Magnesium Alloy
Processing Platform	Brompton, Nova, Evision	Brompton, Nova, Evision
Operational Temp / Humidity	-20°-45°C, 10-90%RH -4°-113°F, 10-90%RH	-20°-45°C, 10-90%RH -4°-113°F, 10-90%RH
Storage Temp / Humidity	-40°-60°C, 10-90%RH -40°-140°F, 10-90%RH	-40°-60°C, 10-90%RH -40°-140°F, 10-90%RH
IP Rating	IP40	IP65
Certifications	CE, FCC, ETL, UKCA, RoHS, WEEE	CE, FCC, ETL, UKCA, RoHS, WEEE

Notes: The specifications are for reference, actual values may vary.

Dimensions



www.roevisual.com

ROE China | ROE US | ROE EU | ROE UK | ROE JP | ROE ME | ROE AUS

roe@roevisual.com